



Roxtec S-gennemføring med SE PPS

Gennemføringer til flere plastrør.

Roxtec SE PPS med S er en udvidelse af en Roxtec-standardgennemføring til beskyttelse af flere plastrørspenetrationer mod brandfare. Tætningen tillader en blanding af rørmaterialer (metal og plast) og i nogle tilfælde kabler i samme åbning. S-rammen er til svejsning på konstruktionen. Standardtætningsmodulerne kan tilpasses kabler og rør af forskellig størrelse og kan bruges til indbygget reservekapacitet i gennemføringen.



- Pladsbesparende

Produktegenskaber



Brandklassificeret



Vandtæt



Gastæt

Byggekonstruktion



Metal

Monteringstype



Svejsning

Normeringer og certifikater

Brand

- A-KLASSE i henhold til IMO 2010 FTP-kode

Tæthed

- Gas: 2,5 bar (katastrofe)
- Vand: 4 bar (katastrofe)

Rammedimensioner

mm/kg

De nedenstående rammevarianter udgør et begrænset udvalg. Du kan se hele udvalget af rammer og konfigurationer på [roxtec.com](https://www.roxtec.com).

Title	Rammeåbninger	Pakkeareå	Udvendige mål WxHxD	Åbningsmål w x h	Vægt	Art.-nr.
S 6x1 ALU	1	120 x 180	140.5 x 238 x 60	143(+1/-1) x 240(+1/-1)	1.2	S006000000131
S 6x1 PRIMED	1	120 x 180	140.5 x 238 x 60	143(+1/-1) x 240(+1/-1)	3.3	S006000000112
S 6x1 AISI316	1	120 x 180	140.5 x 238 x 60	143(+1/-1) x 240(+1/-1)	3.3	S006000000121
S 6x2 PRIMED	2	120 x 180	271 x 238 x 60	273(+1/-1) x 240(+1/-1)	5.5	S006000000212
S 6x2 ALU	2	120 x 180	271 x 238 x 60	273(+1/-1) x 240(+1/-1)	1.9	S006000000231
S 6x2 AISI316	2	120 x 180	271 x 238 x 60	273(+1/-1) x 240(+1/-1)	5.5	S006000000221
S 6x3 PRIMED	3	120 x 180	401.5 x 238 x 60	404(+1/-1) x 240(+1/-1)	7.7	S006000000312
S 6x3 AISI316	3	120 x 180	401.5 x 238 x 60	404(+1/-1) x 240(+1/-1)	7.7	S006000000321
S 6x3 ALU	3	120 x 180	401.5 x 238 x 60	404(+1/-1) x 240(+1/-1)	2.6	S006000000331



Data om tætningskomponenter

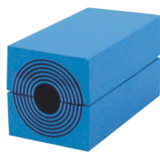
Tætningskomponenter



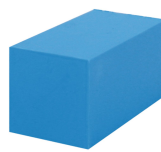
Lubrikant



wedge og wedgekit



RM-module med
Multidiameter™



RM fast
kompensationsmodul



Stayplate



SE
PPS-forlængerramme



holderværktøj



tætningskit



svejsværktøjer

For mer information, besøg venligst [roxtec.com](https://www.roxtec.com).

The product information provided by Roxtec does not release the purchaser of the Roxtec system, or part thereof, from the obligation to independently determine the suitability of the products for the intended process, installation and/or use.

Roxtec gives no guarantee for the Roxtec system or any part thereof and assumes no liability for any loss or damage whatsoever, whether direct, indirect, consequential, loss of profit or otherwise, occurred or caused by the Roxtec systems or installations containing components not manufactured by an authorized manufacturer and/or occurred or caused by the use of the Roxtec system in a manner or for an application other than for which the Roxtec system was designed or intended.

Roxtec expressly excludes any implied warranties of merchantability and fitness for a particular purpose and all other express or implied representations and warranties provided by statute or common law. User determines suitability of the Roxtec system for intended use and assumes all risk and liability in connection therewith. In no event shall Roxtec be liable for indirect, consequential, punitive, special, exemplary or incidental damages or losses.

The Roxtec products are offered and sold in accordance with the conditions of the Roxtec General Terms of Sales. The latest version of the Roxtec General Terms of Sales can be downloaded from <https://www.roxtec.com/en/about-us/about-roxtec/general-terms-of-sales/>

We reserve the right to make changes to the product and technical information without further notice. Any errors in print or entry are no claims for indemnity. The content of this publication is the property of Roxtec International AB and is protected by copyright.

This document was generated on: 2024-04-11